



HEIGHT SAFETY & RESCUE EQUIPMENT

## PRODUCT GUIDE

TEL: 02380 811937

[www.pml-lifting.co.uk](http://www.pml-lifting.co.uk)

MORGAN'S YARD, BARTLEY, HAMPSHIRE, SO40 2LH

CONNECTORS	4 - 5	INDUSTRIAL HARNESSSES
LANYARDS	6 - 7	LANYARDS & SLINGS
HARNESS KITS	8 - 9	HARNESS KITS
TECHNICAL HARNESSSES	10 - 11	WORK POSITIONING
ACCESSORIES	12 - 13	ROPE & BAGS
ROPE DEVICES	14 - 15	PULLEYS & RIGGING PLATES
FALL ARREST DEVICES	16 - 17	FALL ARREST & DESCENDERS
WINCHES	18 - 19	BRACKETS
TRIPOD KITS	20 - 21	TRIPOD KITS
TRIPODS	22 - 23	STORAGE
SLIX100 STRETCHER	24 - 25	LIFTING BRIDLES
STRETCHERS	26 - 27	SPINAL SPLINTS
SLIX BARIATRIC STRETCHER	28 - 29	BARIATRIC ACCESSORIES
HORIZONTAL SYSTEMS	30 - 31	PULLEY SYSTEMS
SPECIALIST SYSTEMS	32 - 33	LADDERS & ACCESSORIES
DAVIT ARMS	34 - 35	ANALOG DAVITS
DAVIT BASES	36 - 37	BARREL MOUNTS
DAVIT SYSTEMS	38 - 39	DAVIT SYSTEMS
DAVIT SYSTEMS	40 - 41	ANCHORS
THE CUBE	42 - 43	THE EXOSPHERE
MOBILE ACCESS STAIRS	44 - 45	TUFF STEPS
HOW TO ORDER	46 - 47	ACCREDITATION & STANDARDS
TERMS & CONDITIONS	48 - 49	TERMS & CONDITIONS
BULK BUY PRODUCTS	50 - 51	BULK BUY PRODUCTS

GOZ07



Oval Mallion

EN362 25kN

O:16mm

DZ10



Delta Mallion

EN362 45kN

O:12mm

PPESCZ10



Semi Circular Mallion

EN362 45kN

O:10mm

PPEPZ10



Pear Shaped Mallion

EN362 36kN

O:20.5mm

KL202SG



Klettersteig Screwgate

EN362 50kN

O:26mm

SH824



Small Snap Hook

EN362 27kN

O:21mm

KH311TL



Oval Twistlock

EN362 25kN

O:18mm

KH311



Oval Screwgate

EN362 25kN

O:18mm

C853



BOA Twistlock

EN362 40kN

O:24mm

C842



Rescue Screwgate

EN362 45kN

O:25mm

KH407



Pear Scaffold Hook

EN362 35kN

O:53mm

SSE/SSH



Snap Scaffold Hook

EN362 30kN

O:65mm



AB10

Single Point Fully Adjustable Harness with rear 'D' attachment point

EN361



AB20

Two Point Fully Adjustable Harness with rear & thoral 'D' attachment point

EN361



AB20SL

Two Point Fully Adjustable Harness with rear 'D' and thoral soft loop attachment point

EN361, EN1497



ABRES

Three Point Fully Adjustable Rescue Harness with rear & thoral 'D' and overhead 'D' attachment

EN361, EN1497

Small 32" - 37" Chest

Standard 38" - 45" Chest

Large 46" - 58" Chest



### ABRST

Restraint Lanyard c/w KH311 each end

EN358, EN354

50cm ABRST50

1m ABRST100

1.5m ABRST150

2m ABRST200



### ABRSTADJ

1.25-1.75m Adjustable Restraint Lanyard c/w KH311 each end

EN358



### ABLTW1.5

1.5m Twin Shock Absorbing Lanyard c/w KH311 each end

EN358, EN355



### ABL2.0

2m Shock Absorbing Lanyard c/w KH311 each end

EN358, EN355



### ABL2.0SH

2m Shock Absorbing Lanyard c/w SSE/SSH & KH311

EN358, EN355



### ABLTW1.5SH

1.5m Twin Shock Absorbing Lanyard c/w SSE/SSH and KH311

EN358, EN355



### ABLRST

Combi Lanyard (MEWPS) Shock Absorbing Lanyard (1.25/1.95m) and Restraint Lanyard (1.75m) Combined

EN358, EN355



### ABSRL1.5SH

1.5m Rope Shock Absorbing Lanyard c/w SSE/SSH and KH311

EN358, EN355



### ABTRL1.25SH

Twin Rope Shock Absorbing Lanyard, 1.25m lines c/w SSE/SSH and KH311

EN358, EN355



### ABXXXR

Round Sling (25mm Webbing)

EN795 CLASS B, EN358

40cm	AB40R
1.2m	AB120R
2m	AB200R
2.4m	AB240R
6m	AB600R



### ABXXXHV

Anchor Sling c/w Hi Vis protective sleeve and end loops. c/w 1 x KH311

EN358, EN354

1m	AB100HV
1.5m	AB150HV
2m	AB200HV



### WS

Wire Anchor Sling c/w plastic protective sleeve

EN795 CLASS B

1m	WS100
1.5m	WS150
2m	WS200

WORKING AT HEIGHT KIT 1



AB10KIT

Single Point Harness, 2m Shock Lanyard with Scaffold Hook and Kit Bag

EN361, EN358, EN355

WORKING AT HEIGHT KIT 2



AB20SLKIT

Two Point Soft Loop Harness, 2m Shock Lanyard with Scaffold Hook and Kit Bag

EN361, EN358, EN355

WORKING AT HEIGHT KIT 3



AB20LTW

Two Point Harness, 1.5m Twin Shock Lanyard with Scaffold Hooks and Kit Bag

EN361, EN358, EN355

## ACCESS PLATFORM KIT



AB10ADJ

Single Point Harness, 1.25 - 1.75m Restraint Lanyard and Kit Bag (MEWPS)

EN361, EN358

## COMBI KIT



COMBI

Combination Harness Kit. Integral Restraint (1.75m) and Fall Arrest (1.25/1.95m) (MEWPS) and Kit Bag

EN361, EN358, EN355

## WEB FALL ARREST KIT



AB10/2.4T

Single Point Harness, 2.4m Webbing Fall Arrest and Kit Bag

EN361, EN360





**ABELITE**

Access Elite Harness with rear 'D' connection, thoral attachment and 30cm rear extension attachment

EN361, EN1497



**ABPRO**

Access Pro Harness with rear and thoral 'D' attachment, ventral attachment and side links for work positioning plus tool loops

EN361, EN358, EN1497, EN813



**ABISH**

Industrial Sit Harness with detachable shoulders

EN361, EN813



**ABNAP**

Rescue Nappy Harness

TESTED TO EN1497



### ABPS

2m Pole Strap c/w manujust

EN358, EN353-2



### ABRAT

Rope Rat adjustable work positioning lanyard c/w hook and protective cover - 2m (Also available in 5m & 10m lengths POA)

EN358



### ABWP

Work Positioning Belt. Can be added to any Abtech Industrial Harness (not retrofit)

EN358



### ABBC

Bosuns work positioning chair

NOT PPE



### ABBS

Bosuns work positioning seat

NOT PPE



**HELM-W**

Climbing Helmet with chin strap.  
Available in white (HELM-W)  
or orange (HELM-O)

EN12492



**ABJ-Y**

Hi Vis Jacket with openings and fastenings  
for attaching a harness.  
Available in Orange (ABJ-O)

EN471



**ABLSS**

Leg Suspension Strop for comfort when  
suspended in a harness.  
(Retrofit to any harness)

NOT PPE



## LR/11

11mm Static Rope

EN1891 TYPE A

1m	LR/11/1
50m	LR/11/50
100m	LR/11/100
200m	LR/11/200

## F8

Add a heat shrunk Fig.8 & KH311 Karabiner to your 11mm rope



## ABBAG

Kit Bag. Front zip, Two padded shoulder straps. Ideal for carrying your harness and lanyard

NOT PPE



## ABR

16mm Nylon Rope c/w Plastic Eye each end

EN358

5m	ABR05
10m	ABR10
15m	ABR15
20m	ABR20



## ABXRBAG

Roll Top Rope Bag, with eyelet in base, shoulder straps and buckle closure

NOT PPE

50m	ABSRBAG
100m	ABMRBAG
150m	ABLRBAG
200m	ABXLRBAG



RP209

Rope Grab for 11-13mm rope

EN353-2



RP220

Right Hand Ascender with Two Sling Holes

EN567



D200S0

Petzl I'D Descender

EN341, EN12841 TYPE C



ABRR

Auto Rope Grab for 16mm rope

EN353-2



ABRP

Manual Rope Grab for 16mm rope

EN353-2



RP880

D4 Work Rescue Descender

EN12841



ER100-4

Edge Roller (batch of 4 modules)

NOT PPE



CRP70

Canvas Rope Edge Protector

NOT PPE



EPPLUS

Ribbed Rope Edge Protector

NOT PPE



RP012

Small Single Pulley  
12mm Rope

EN12278

36kN



RP030

Small Double Pulley  
10-12mm Rope

EN12278

36kN



RP033

Medium Double Pulley  
10-13mm Rope

EN12278

36kN



RP034

Medium Double Ended  
Pulley

EN12278

36kN



RP700

Large Double Pulley - One  
Way Locking. 11-13mm  
Rope

EN12278

30kN



RP066

Large Single Prussik Pulley.  
Stainless Steel. 16mm  
Rope

EN12278

50kN



RP705

Double Rescue Hauler  
11-13mm Rope

EN12278, EN567



RP300 / RP310 / RP320

Small, Medium & Large  
Rigging Plates

NOT PPE

RP300 36kN

RP310 40kN

RP320 45kN



RP500

Rocker Rope Grab  
for 10.5-13mm Rope

EN353-2



**AB2.4T**

2.4m Webbing Fall Arrest  
c/w Load Indicator Swivel

EN360, ANSI Z359.1



**AB2.4TTW**

Twin 2.4m Webbing Fall  
Arrest c/w Load Indicator  
Swivel

EN360, ANSI Z359.1



**MERLIN33**

3.3m Retractable Webbing  
Lanyard

EN360

**MERLIN66**

6.6m Retractable Webbing  
Lanyard

EN360

Do you require a connector to  
hang your fall arrest device?  
Please see page 4 for the  
range available



**AB6T**

6m Fall Arrest Device, 5mm  
Galvanised Steel Cable

EN360, ANSI Z359.1



**AB10T**

10m Fall Arrest Device,  
5mm Galvanised Steel  
Cable

EN360, ANSI Z359.1



**AB15T**

15m Fall Arrest Device,  
5mm Galvanised Steel  
Cable

EN360, ANSI Z359.1

**AB15RT**

15m Fall Arrest Winch, 5mm  
Galvanised Steel Cable

EN360, EN1496, ANSI  
Z359.1



**AB534G**

34m Fall Arrest Device,  
5mm Galvanised Steel  
Cable

EN360

**AB434G**

34m Fall Arrest Recovery  
Device, 5mm Galvanised  
Steel Cable

EN360, EN1496

**HAS18/IKV17**

18m Fall Arrest / Auto  
Descender, 5mm  
Galvanised Steel Cable

EN360, EN341, EN364





18561

UCL 27m Man Riding Winch

EN1496



60005

Tuff 30m Man Riding Winch

EN1496



60011

Tuff 45m Man Riding Winch

EN1496



60257

Tuff 30m Materials Winch

NOT PPE



T05T

15m TORQ to Tripod Bracket

Eng. Calc.



60176

15m TORQ to Davit Bracket  
(also item 60141 required)

Eng. Calc



ALKO

ALKO Bracket

Eng. Calc



T05TW

Tuff Winch to Tripod Bracket

Eng. Calc.



60141

Tuff Davit Bracket

Eng. Calc



60141/EYE

Davit Anchor Bracket - ideal for  
abseiling requirements

Eng. Calc



60209

45m Winch to Davit

Eng. Calc.



60128

Analog Davit Bracket

Eng. Calc



SA210T

34m to Tripod Bracket

Eng. Calc



**CST1KIT**

T3 Tripod, AB15RT 15m Fall Arrest Winch and T05T Bracket

EN795 TYPE B, EN360, EN1496



**CST2KIT**

T3 Tripod, AB15RT 15m Fall Arrest Winch, T05T Bracket and ABRES Rescue Harness

EN795 TYPE B, EN360, EN1496, EN361, EN1497



**CST3KIT**

T3 Tripod, 18561 27m Winch and ALKO Brackets

EN795 TYPE B, EN1497



### CST4KIT

T3 Tripod, 18561 27m Winch, ALKO Brackets and ABRES Rescue Harness

EN795 TYPE B, EN1496, EN361, EN1497



### CST5KIT

T3 Tripod, 60005 30m Winch and T05TW Bracket

EN795 TYPE B, EN1496



### CST6KIT

T3 Tripod, 60005 30m Winch, T05TW Bracket and ABRES Rescue Harness

EN795 TYPE B, EN1496, EN361 and EN1497

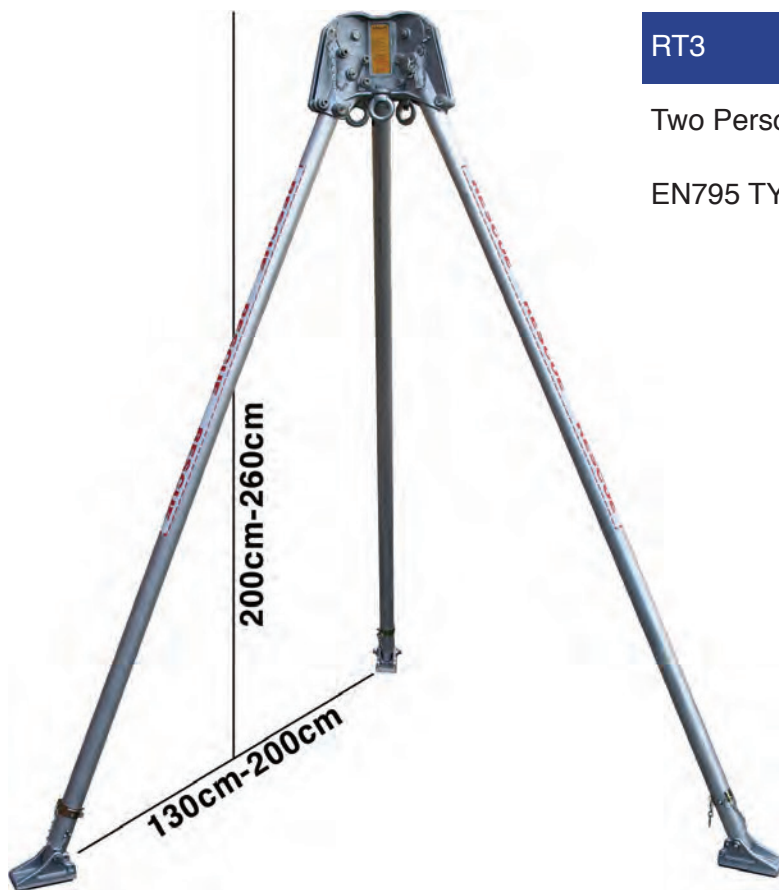
the Tripod (T3) and add an extra £150.00 to the above price and use code CSRTXKIT



T3

Two Person Tripod

EN795 TYPE B



RT3

Two Person Rescue Tripod

EN795 TYPE B



T07

Bag for T3 Tripod

NOT PPE



TORQBAG

Carry Bag with solid base  
for TORQ devices

NOT PPE

RT07

Bag for RT3 Tripod

NOT PPE



UCLBAG

Carry Bag with solid base  
for 18561 Winch

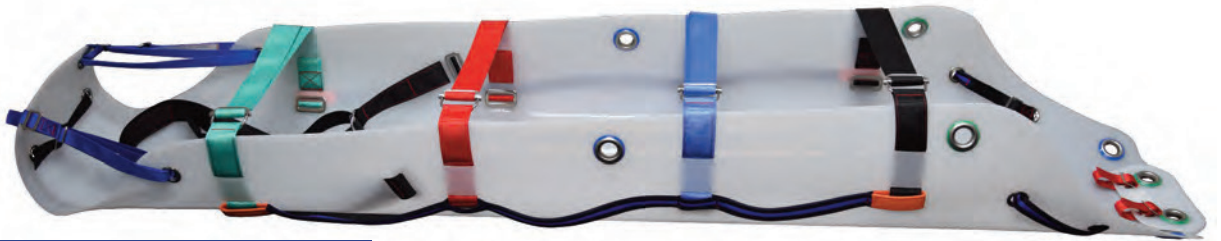
NOT PPE



EU39

Plastic Winch box with foam  
insert

NOT PPE



SLIX100

Rollable Rescue Stretcher

CE 93/42/EEC CLASS 1



SLIX100BAG

Carry Bag for SLIX100

NOT PPE



SLIXVHH

Vertical & Horizontal Hauling Strop

EN 358



Slix100 Stretcher



Hauling Strops



Slix100 Roll Top Bag

SLIX100 KIT

SLIX100 Stretcher, Hauling Strop and Bag

CE 93/42/EEC CLASS 1



Rolled Stretcher with sewn carry handle



### SPALB

Stretcher Lifting Bridles

NOT PPE

### ABSS

Adjustable Lifting Bridle Set  
520mm to 1880mm

NOT PPE



### SLIXWS

Wire Stretcher Lifting Bridles. Colour coded for SLIX100. Complete with connectors.

NOT PPE







**SLIX50COM**

SLIX Confined Space  
Stretcher with integral  
Spinal Splint and Carry Bag

CE 93/42/EEC CLASS 1



**SLIXRR**

SLIX Rapid Response  
Stretcher & Carry Bag

CE 93/42/EEC CLASS 1



**RS100**

Rescue Stretcher Kit

NOT PPE



SLIXSS

SLIX Spinal Splint

CE 93/42/EEC CLASS 1



EFS102

Spinal Splint

NOT PPE



EFS102/2

Spinal Splint with flotation insert

NOT PPE



**SLIX100XL**

Bariatric Patient Rescue Stretcher

CE 93/42/EEC CLASS 1

**SLIX100XLKIT**

Bariatric Patient Rescue Stretcher, Lifting Straps and Carry Bag

CE 93/42/EEC CLASS 1

**SLIXBAGXL**

Carry Bag for SLIX100XL

NOT PPE



**SLIXVHXL**

Vertical Hauling Straps for SLIX100XL

EN358



**SLIXHHXL**

Horizontal Hauling Straps for SLIX100 XL

EN358





**C-BAR**

Ceiling Anchor

Eng. Calcs



**RP705**

Double Rescue Hauler  
11-13mm Rope

EN12278, EN567

30kN

**KH219SS**



**Supersafe Karabiner**

EN362

70kN

28mm



**ABRALF**

RALF - 2 Way Auto Locking.  
Rescue Configuration, 15m  
Working Length at 5:1.  
350kg Working load Limit.  
Rigged System of CE  
Approved Products



## HONOR-T

25m Horizontal System for 2 Users  
c/w 2 x 15m Fall Arrest Devices  
(max 5 users)

EN795/A1 CLASS C, EN360



## ABTL20

20m Horizontal System for up to 2 Users

EN795/A1 CLASS C



## VRS

Vertical Rescue System 15m Working Length. Reach pole and pre-rigged pulley system. Rigged with 11mm Rope

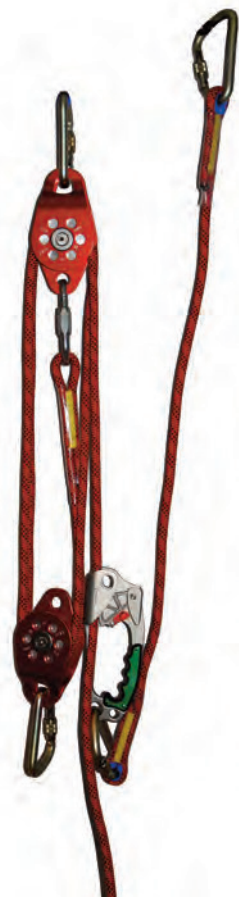
Rigged System of CE Approved Products



## ABRALF

RALF - 2 Way Auto Locking. Rescue Configuration, 15m Working Length at 5:1, 350kg Working Load Limit. Rigged with 11mm Rope

Rigged System of CE Approved Products



## VWR1

15m Vertical Work & Rescue System. Pre-Rigged pulley system for self rescue, raising and lowering. Rigged with 11mm Rope

Rigged System of CE Approved Products



ROOFERKIT1

Rofer Kit - For safe working on pitched roofs

System of CE Approved Products



ROOFERKIT2

Rofer Kit - For safe working on pitched roofs

System of CE Approved Products



ROOFERKIT3

Rofer Kit - For safe working on pitched roofs

System of CE Approved Products



CONT

Container Safe System. Pre rigged for safe working on shipping containers. Contains AB10 Harness, Restraint Kit and Connectors

Rigged System of CE Approved Products



### FLEXIS

Single Flexi Ladder 3m

NOT PPE



### FLEXID

Double Flexi Ladder 3m

NOT PPE

### FLEXILH

Ladder Hanger for Flexi Ladder

NOT PPE



### ABS-LRA

Ladder Roof Anchor. Screws into roof rafters to provide a hold point for your ladder and an anchor point for the user

EN 795 TYPE A & B,  
EN 517 TYPE B



### ABS-LH

Ladder hanger. Adjusts to fit up to 24cm ladder rung gaps. Prevents slipping and tipping

NOT PPE





30104  
28" (711mm) Reach, 54" (1390mm) Height.  
Upper Davit  
EN795 CLASS B



30105  
28" (711mm) Reach, 66" Height (1676mm).  
Upper Davit  
EN795 CLASS B



30108  
40" (1016mm) Lower Davit  
EN795 CLASS B



30109  
52" (1320mm) Lower Davit  
EN795 CLASS B



Various Height and Offset Analog Davits are available

50031

Analog One-Piece Davit,  
Height 102" (2.59m), Reach 52" (1.32m)

EN795 CLASS B

50037

Analog One-Piece Davit,  
Height 118" (2.99m), Reach 90" (2.28m)

EN795 CLASS B



30031

Floor Mount

EN795 CLASS B



30032

Wall Mount

EN795 CLASS B



30023

Flush Floor Mount for fresh concrete

Eng. Calc

We stock Davit Bases in Galvanised Steel. If you require Stainless Steel, please call for prices and availability.



30021

Flush Floor Mount for existing concrete

EN795 CLASS B



30080

Deck Mount Base

EN795 CLASS B



30019

Sleeve Cap

NOT PPE



30036

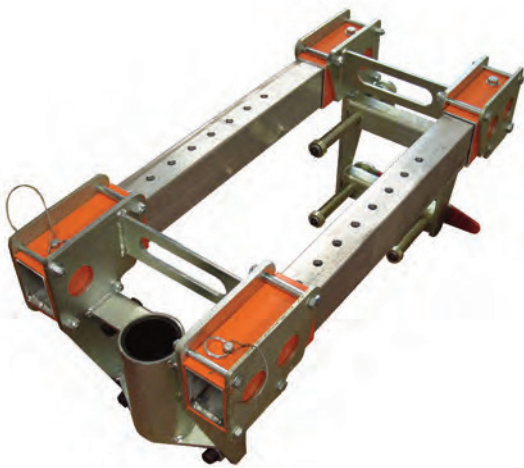
Barrel Mount Base  
Max of 2.25" (57mm) Throat

EN795 CLASS B

30161

Barrel Mount Base  
Max of 5" (127mm) Throat

EN795 CLASS B



30029

Adjustable Barrel Mount Base  
2.25" to 25" (57mm - 635mm) Throat

EN795 CLASS B



ABDCOV

Davit Cover. Fits over the 30105, 30109 and 60005 so they can be left in situ, Zip fastens

NOT PPE

30073-KIT

Counterweight Base, Upper (30105) & Lower (30109) Davit, 15m Fall Arrest Winch, 30m Man Riding Winch and 360kg of Weights

EN795 CLASS B



30073

Counterweight Base. For use with Upper & Lower Davits. (Requires weights)

EN795 CLASS B



WEIGHT30

2 x 15kg Weights

NOT PPE



30445

Counterweight Cart Base. For use with Upper & Lower Davits. (Requires weights)

EN795 CLASS B



30029-KIT

Adjustable Barrel Mount Base, Upper (30105) & Lower (30109) Davit, 15m Fall Arrest Winch and 30m Man Riding Winch

EN795 CLASS B



30070-KIT

5 Piece System. Upper (30105) & Lower (30109) Davit, Portable Base and 30m Man Riding Winch

EN795 CLASS B



30093

Vehicle Hitch Mount Base (Davit Arm not included)

EN795 CLASS B

30040

5ft to 10ft Pole Hoist (1.58m - 3.15m)  
EN795 CLASS B

£2537.08



30040KIT

5ft to 10ft Pole Hoist c/w 30m Man Riding Winch

EN795 CLASS B



30234/235

Horizontal Entry - 72" (1.82m) Mounting Post & Arm Assembly (requires davit base)

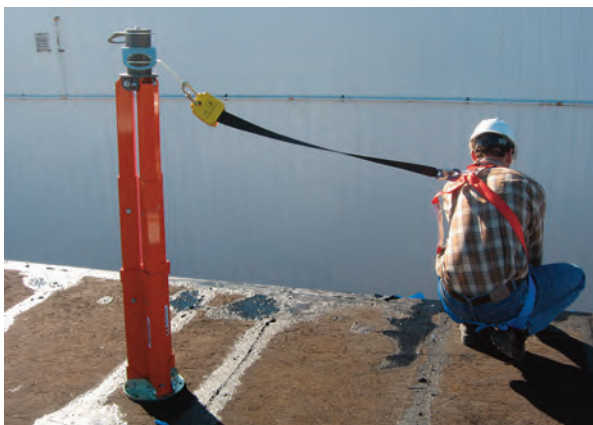
EN795 CLASS B



30222/235

Horizontal Entry - Clamping Base & Arm Assembly

EN795 CLASS B



30137

Tri-Post. 3 Person Fall Arrest Post - 55" (1.39m)

EN795 CLASS B



60048

Door/Window Brace 560mm - 1100mm

EN795 CLASS B



GG101

Girder Anchor - 40mm

EN795 CLASS B

GG201

Concrete Anchor - 330mm

EN795 CLASS B



60037

Beam Clamp 127mm - 350mm

EN795 CLASS B



CT102

Removable Anchor

EN795 CLASS B

60038

Beam Clamp 127mm - 760mm

EN795 CLASS B





70375

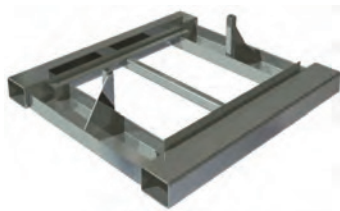
CUBE Package.  
Single Fixed Anchor Point.  
Height - 7.75m  
Reach - 3.04m

EN795 CLASS B

70377

CUBE Package.  
Double Adjustable Anchor Point.  
Height - 4.33m to 7.16m  
Reach - 3.04m

EN795 CLASS B



70225

CUBE Stabilizer Base for use with Forklift



70224

CUBE Trailer



## EXOSPHERE

Hydraulic Davit. Remote control to manoeuvre and raise and lower davit. In the event of a fall, the davit can be lowered to get the casualty to ground level.

£POA

20039

6ft Diameter Aluminium  
Cage with Rubber Bumpers  
NOT PPE

70075

MASS PRO-1 104"-186" H c/w Pneumatic  
Wheels  
EN795 CLASS B

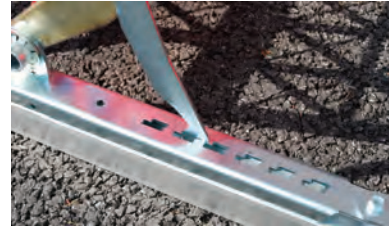
70076

MASS PRO-1 70"-120"H c/w Urethane  
Wheels  
EN795 CLASS B



20040

Outrigger Base to stabilise /  
level MASS  
NOT PPE



pictured: 1.3m Narrow Step System c/w Handrails one side

#### Tuff Step - Narrow (460mm)

Narrow Step Section

NOT PPE

#### Tuff Step - Wide (830mm)

Wide Step Section

NOT PPE

Code	m	No. Steps	Price
15006	1.3m	4	
15007	2.6m	8	

Code	m	No. Steps	Price
15008	1.3m	4	
15009	2.6m	8	

## Handrail Accessories

CODE	DESCRIPTION
15075	Connection Tube - Wide Steps
15076	Connection Tube - Narrow Steps
15078	Connection Post
15084	Centerpiece Handrail - to cover 4 steps
15085	End Rails